

Violin II

# Râzi

Dan Byron

**A**  $\text{♩} = 74$  **6** Solo

*mf* *gliss.*

**B** *gliss.* *f* *unis.*

14

21

26

**C** *ff*

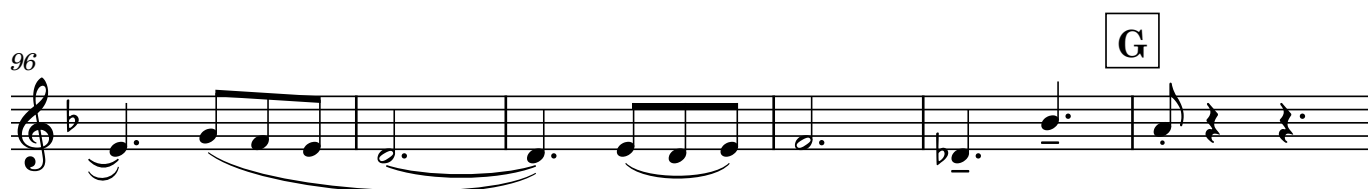
31

36

**D** *f*

44

52



102 H

114

121 I

128 *ff*

137 J

143

147

151

155

This musical score for Violin II, titled 'Râzi', spans measures 102 to 155. The key signature has one flat (B-flat). The score is divided into eight systems, each containing a single staff. Measure numbers are placed at the beginning of each system. Section markers H, I, and J are enclosed in boxes above specific measures. Dynamic markings include *f* (forte) and *ff* (fortissimo). The notation includes various note values (quarter, eighth, sixteenth, and dotted notes), rests, and accidentals (sharps and flats). Slurs are used to group notes in measures 147, 151, and 155. Measure 102 begins with a whole rest followed by a fermata. Measure 128 features a half note followed by a whole rest. Measure 137 starts with a half note and a fermata. Measure 143 contains a half note with a fermata. Measure 147 has a half note with a fermata. Measure 151 has a half note with a fermata. Measure 155 has a half note with a fermata.